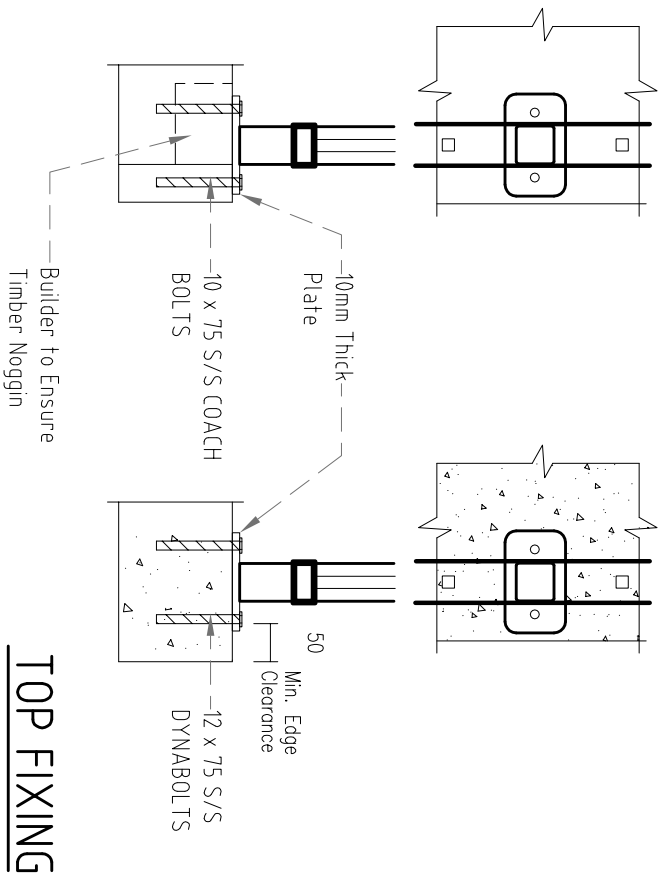
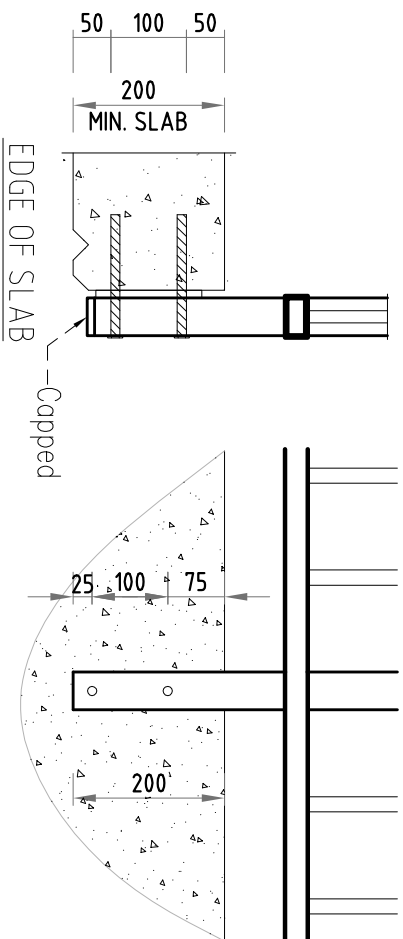


TIMBER

CONCRETE - Standard



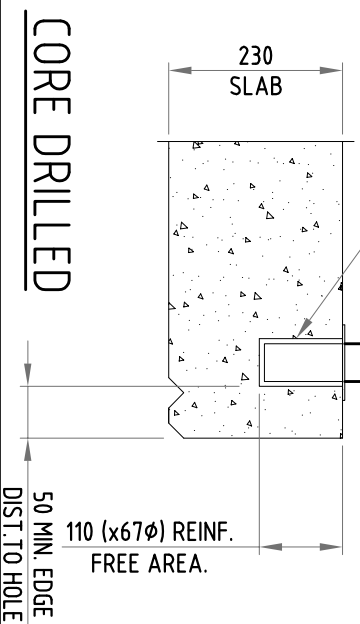
TOP FIXING



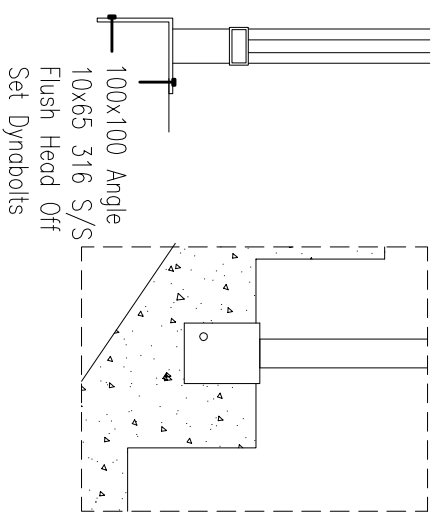
SIDE FIXING

-10x100mm 316 S/Steel Flush Head Dynabolt

DIAMOND CORED 67φ x 110mm HOLE CENTRALLY PLACED IN CONCRETE DECK/PATH WITH POWDERCOATED ALUMINIUM COVER PLATE TO CONCEAL EMACO SET 45 EPOXY GROUT.



CORE DRILLED



ANGLE FIXING

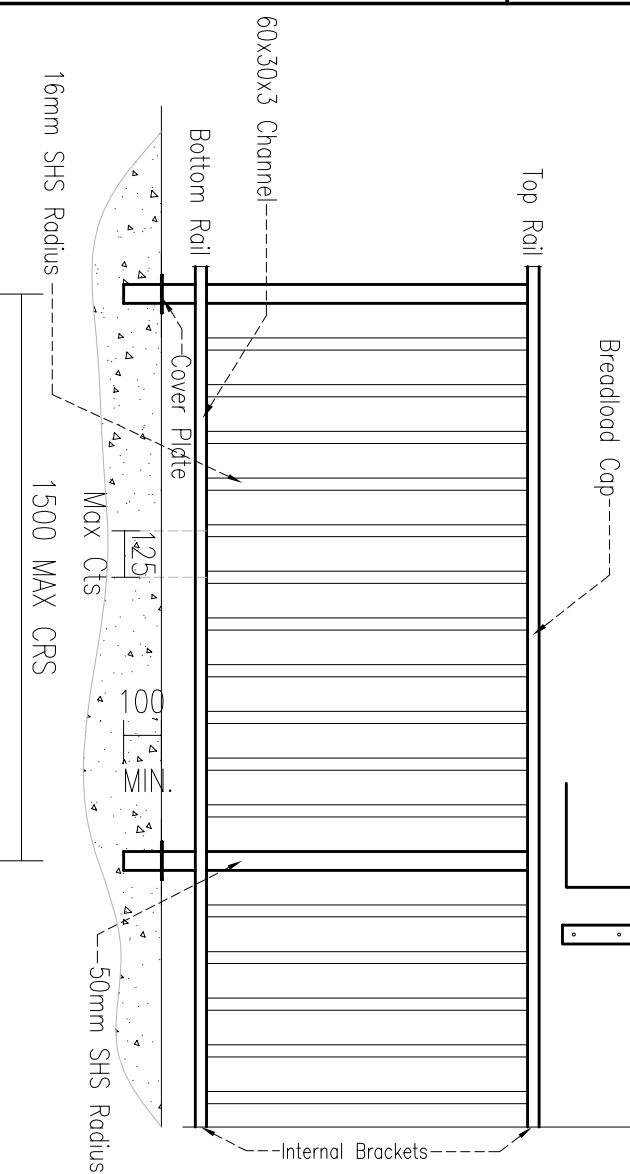


SECTION

900

STAIR ELEVATION

N.T.S.



FRONT ELEVATION

N.T.S.

PROJECT:

BOND1

DRAWING TITLE:

STD FENCING

SCALE:

1:10

DATE:

12/09/2011

JOB NUMBER:

ISSUE:

A

ALUMINIUM BALUSTRADES!
NORTH COAST